



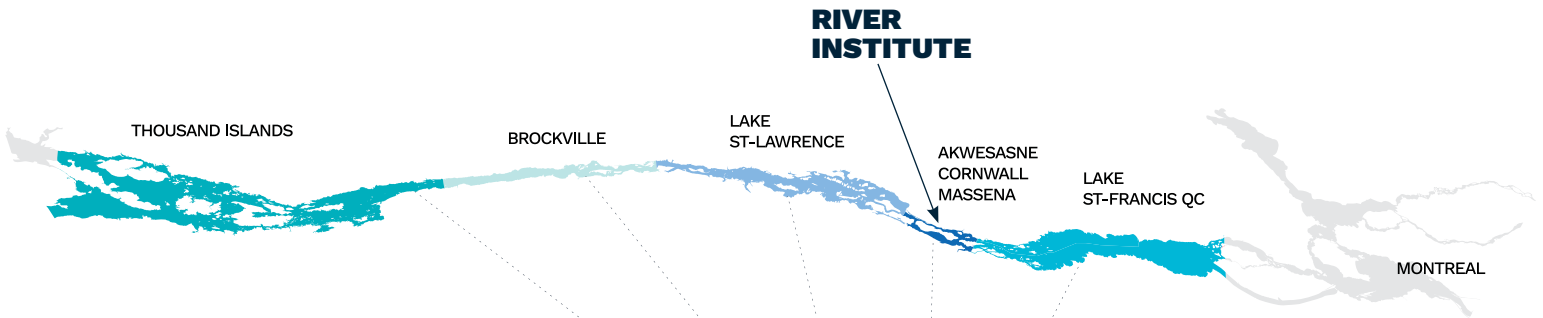
Developing a new approach to understanding river health

The Great Lakes-St. Lawrence River Basin is the single largest watershed in the world.

The upper section of the St. Lawrence River, known as Kaniatarowanenneh in Kanien'kéha (Mohawk), connects the Great Lakes to the Atlantic Ocean and spans national, provincial and territorial borders.

The Great River Rapport is a community-driven initiative that is advancing a new approach to studying and sharing knowledge about ecosystem health for this important waterway.

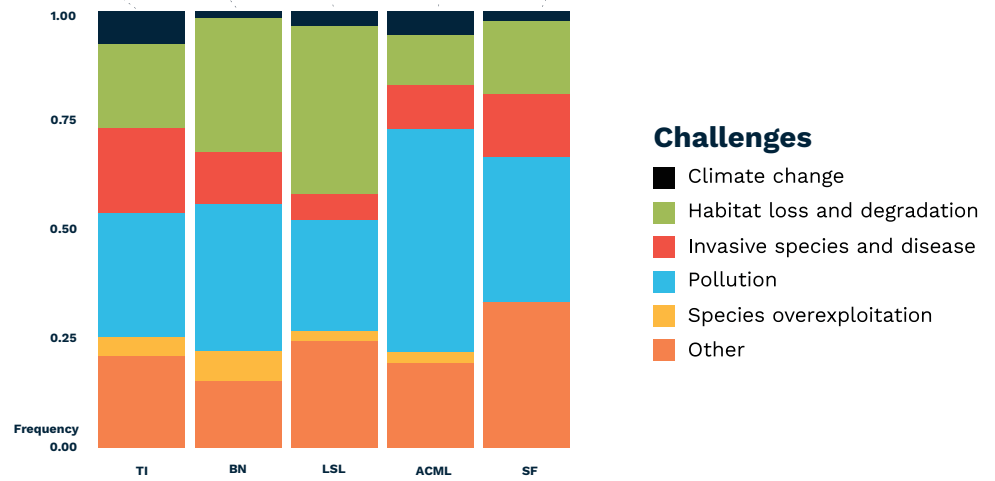
Rooting science in community concerns



Asking community members about their concerns

442

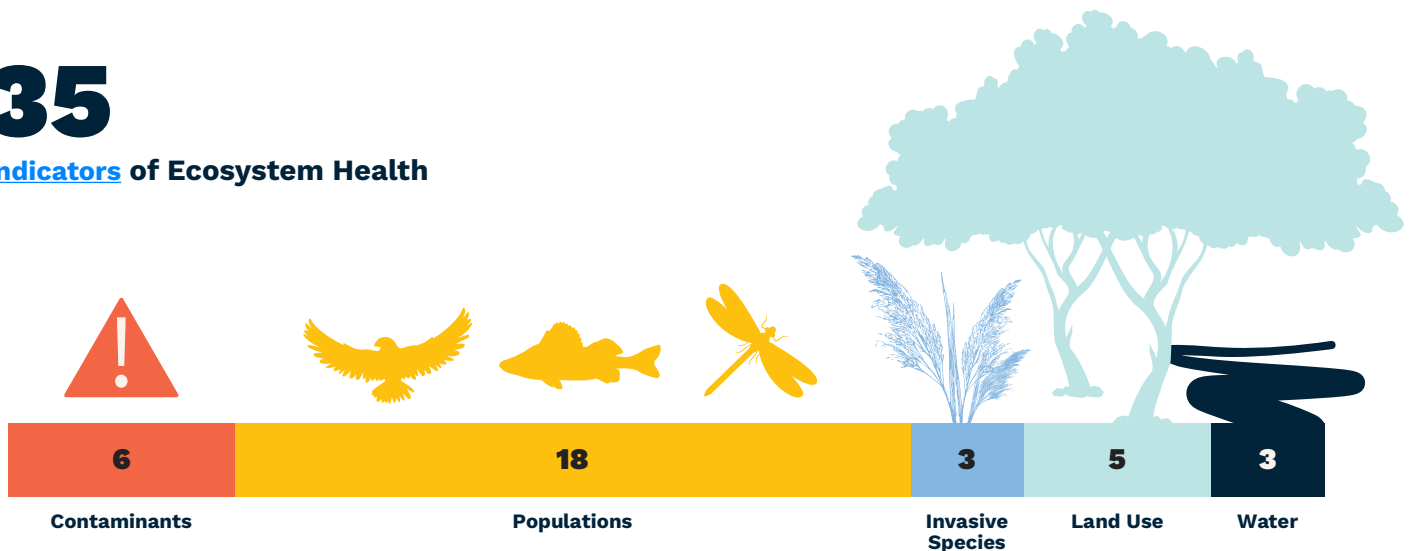
Survey respondents



Identifying indicators of river health that reflect these concerns

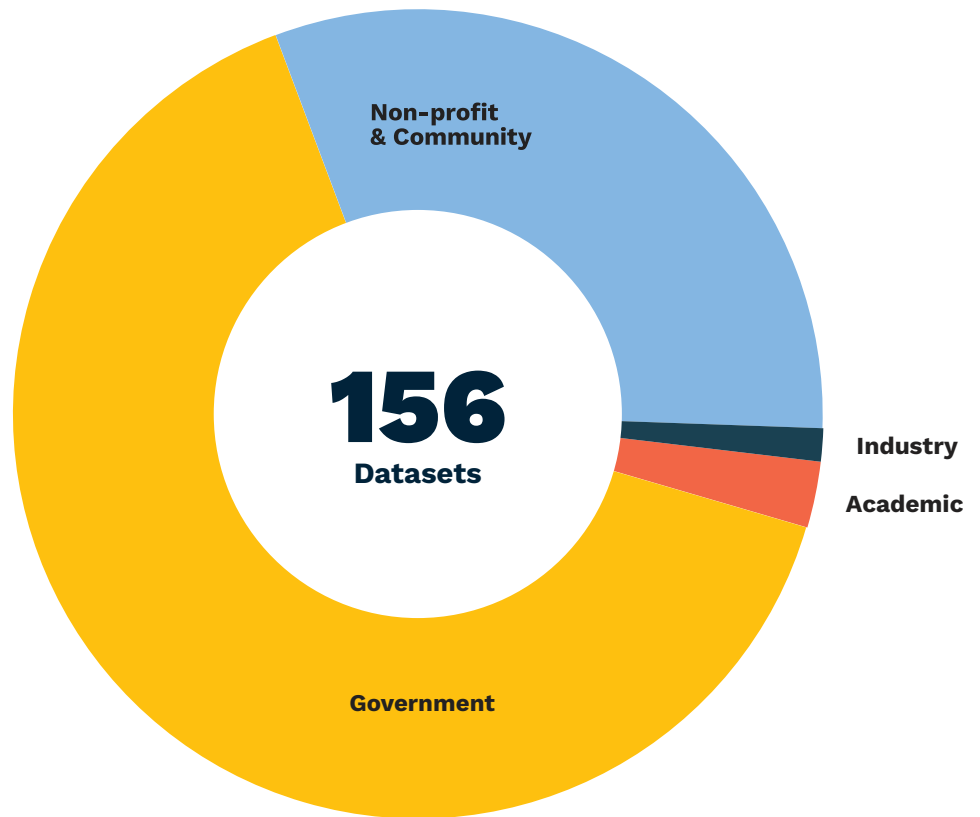
35

Indicators of Ecosystem Health

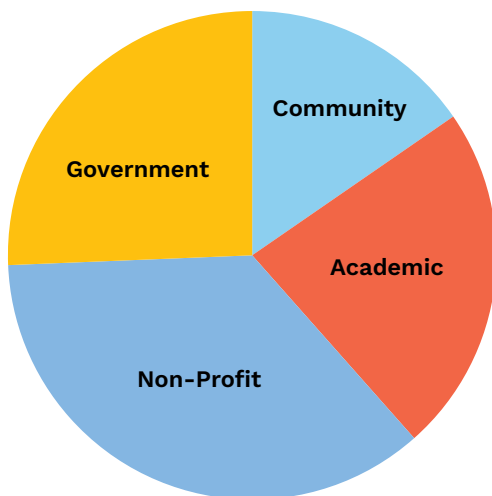


Bringing people and data together

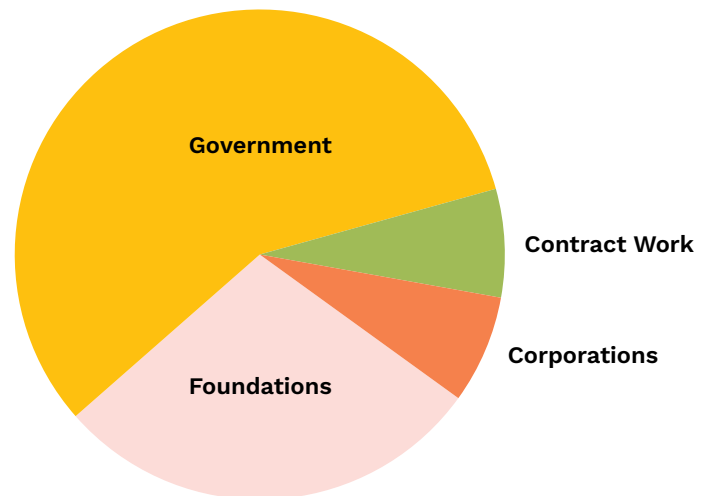
Consolidating data from diverse sources



Building partnerships



39
Collaborators



14
Fundors

Empowering communities

Facilitating knowledge transfer, translation and exchange since 2018

27

Workshops

81

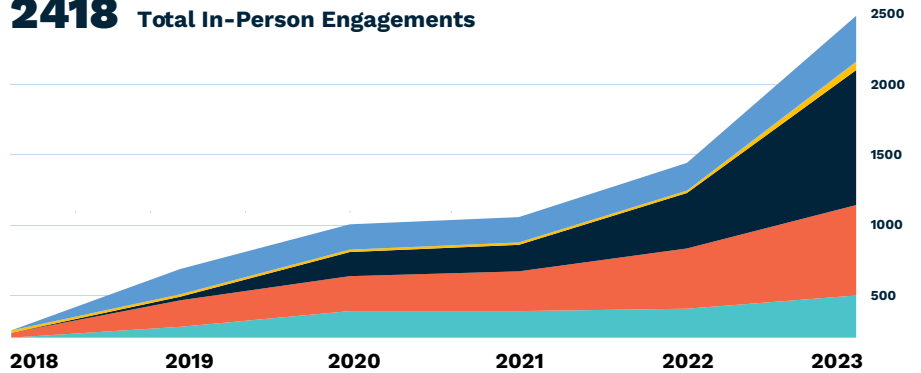
Presentations

7

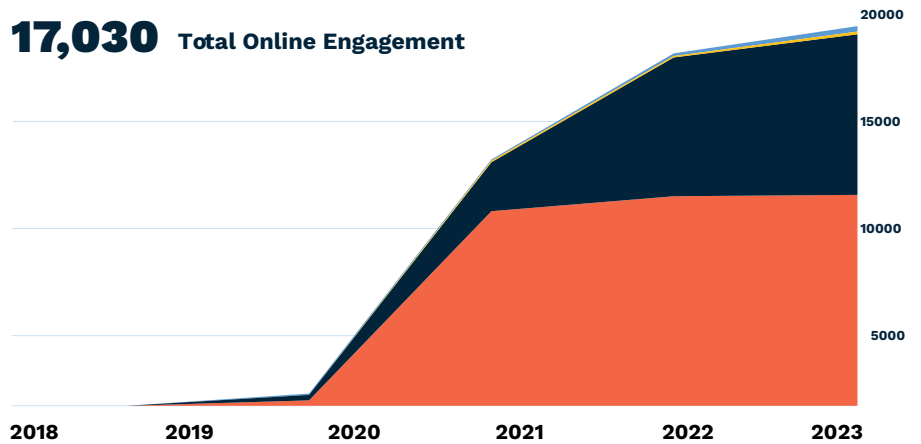
Events

- Public
- Community
- Youth
- Academic
- Policy Makers

2418 Total In-Person Engagements

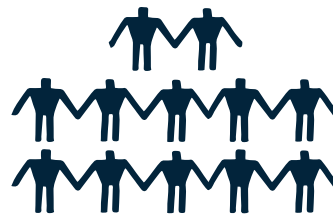


17,030 Total Online Engagement



6

Interns



12

Early Career Scientists



3

Summer Students

Developing capacity within the community

Facilitating and inspiring action



[Strengthening communication and collaboration for river health](#)



[Exploring new ways of viewing ecosystem health](#)



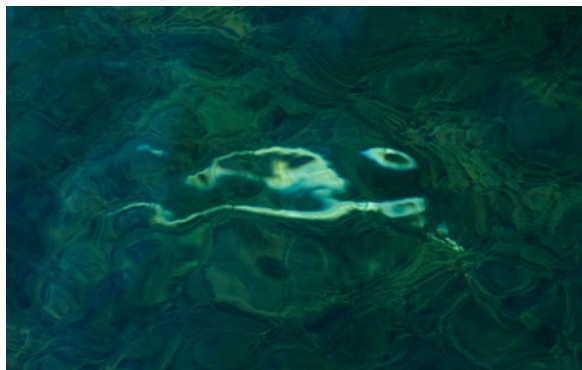
[Engaging the community in habitat restoration](#)



[Celebrating the river through collective environmental action](#)



[Serving as an inspiration to others](#)



[Telling river stories through art](#)